


1–16 □ Find the most general antiderivative of the function.
(Check your answer by differentiation.)

- | | |
|------------------------------------------|------------------------------------------------------|
| 1. $f(x) = 6x^2 - 8x + 3$ | 2. $f(x) = 4 + x^2 - 5x^3$ |
| 3. $f(x) = 1 - x^3 + 5x^5 - 3x^7$ | 4. $f(x) = x^{20} + 4x^{10} + 8$ |
| 5. $f(x) = 5x^{1/4} - 7x^{3/4}$ | 6. $f(x) = 2x + 3x^{1.7}$ |
| 7. $f(x) = \sqrt{x} + \sqrt[3]{x}$ | 8. $f(x) = \sqrt[3]{x^2} - \sqrt{x^3}$ |
| 9. $f(x) = \frac{10}{x^9}$ | 10. $f(x) = \frac{3}{x^2} - \frac{5}{x^4}$ |
| 11. $g(t) = \frac{t^3 + 2t^2}{\sqrt{t}}$ | 12. $f(x) = 3e^x + 7 \sec^2 x$ |
| 13. $f(t) = 3 \cos t - 4 \sin t$ | 14. $f(\theta) = e^\theta + \sec \theta \tan \theta$ |
| 15. $f(x) = 2x + 5(1 - x^2)^{-1/2}$ | 16. $f(x) = \frac{x^2 + x + 1}{x}$ |

 **17–18** □ Find the antiderivative F of f that satisfies the given condition. Check your answer by comparing the graphs of f and F .

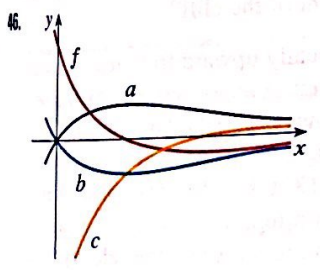
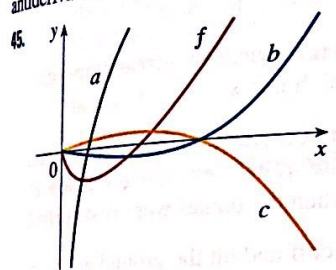
17. $f(x) = 5x^4 - 2x^5$, $F(0) = 4$
 18. $f(x) = 4 - 3(1 + x^2)^{-1}$, $F(1) = 0$

19–42 □ Find f .

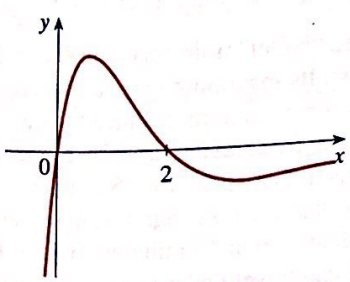
- | | |
|----------------------------------------------------------|------------------------------|
| 19. $f''(x) = 6x + 12x^2$ | 20. $f''(x) = 2 + x^3 + x^4$ |
| 21. $f''(x) = 1 + x^{4/5}$ | 22. $f''(x) = \cos x$ |
| 23. $f'''(t) = e^t$ | 24. $f'''(t) = t - \sqrt{t}$ |
| 25. $f'(x) = 1 - 6x$, $f(0) = 8$ | |
| 26. $f'(x) = 8x^3 + 12x + 3$, $f(1) = 6$ | |
| 27. $f'(x) = 3\sqrt{x} - 1/\sqrt{x}$, $f(1) = 2$ | |
| 28. $f'(x) = 1 + 1/x^2$, $x > 0$, $f(1) = 1$ | |
| 29. $f'(x) = 3 \cos x + 5 \sin x$, $f(0) = 4$ | |
| 30. $f'(x) = 3x^{-2}$, $f(1) = f(-1) = 0$ | |
| 31. $f'(x) = 2/x$, $x < 0$, $f(-1) = 7$ | |
| 32. $f'(x) = 4/\sqrt{1 - x^2}$, $f(\frac{1}{2}) = 1$ | |
| 33. $f''(x) = x$, $f(0) = -3$, $f'(0) = 2$ | |
| 34. $f''(x) = 20x^3 - 10$, $f(1) = 1$, $f'(1) = -5$ | |
| 35. $f''(x) = x^2 + 3 \cos x$, $f(0) = 2$, $f'(0) = 3$ | |
| 36. $f''(x) = x + \sqrt{x}$, $f(1) = 1$, $f'(1) = 2$ | |

- 37. $f''(x) = 6x + 6$, $f(0) = 4$, $f(1) = 3$
 - 38. $f''(x) = 12x^2 - 6x + 2$, $f(0) = 1$, $f(2) = 11$
 - 39. $f''(x) = 1/x^3$, $x > 0$, $f(1) = 0$, $f(2) = 0$
 - 40. $f''(x) = 3e^x + 5 \sin x$, $f(0) = 1$, $f'(0) = 2$
 - 41. $f''(x) = x^{-2}$, $x > 0$, $f(1) = 0$, $f(2) = 0$
 - 42. $f''(x) = \sin x$, $f(0) = 1$, $f'(0) = 1$, $f''(0) = 1$
43. Given that the graph of f passes through the point $(1, 6)$ and that the slope of its tangent line at $(x, f(x))$ is $2x + 1$, find $f(2)$.
44. Find a function f such that $f'(x) = x^3$ and the line $x + y = 0$ is tangent to the graph of f .

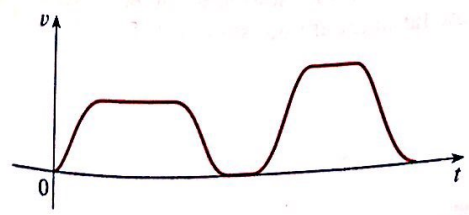
45-46 □ The graph of a function f is shown. Which graph is an antiderivative of f and why?



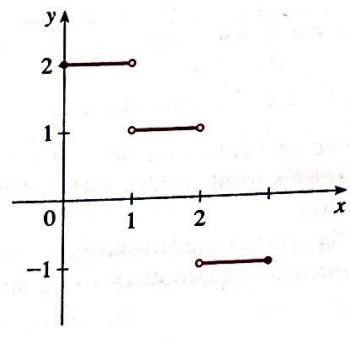
47. The graph of a function is shown in the figure. Make a rough sketch of an antiderivative F , given that $F(0) = 0$.



48. The graph of the velocity function of a car is shown in the figure. Sketch the graph of the position function.



49. The graph of f' is shown in the figure. Sketch the graph of f if f is continuous and $f(0) = -1$.



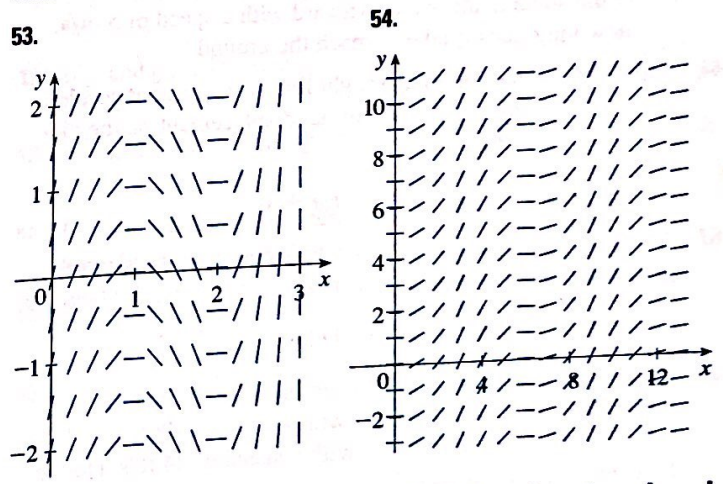
- 50. (a) Use a graphing device to graph $f(x) = 2x - 3\sqrt{x}$.
 (b) Starting with the graph in part (a), sketch a rough graph of the antiderivative F that satisfies $F(0) = 1$.
 (c) Use the rules of this section to find an expression for $F(x)$.
 (d) Graph F using the expression in part (c). Compare with your sketch in part (b).

51-52 □ Draw a graph of f and use it to make a rough sketch of the antiderivative that passes through the origin.

51. $f(x) = \sin(x^2)$, $0 \leq x \leq 4$

52. $f(x) = 1/(x^4 + 1)$

53-54 □ A direction field is given for a function. Use it to draw the antiderivative F that satisfies $F(0) = -2$.



55-56 □ Use a direction field to graph the antiderivative that satisfies $F(0) = 0$.

55. $f(x) = \frac{\sin x}{x}$, $0 < x < 2\pi$

56. $f(x) = x \tan x$, $-\pi/2 < x < \pi/2$

57. A function is defined by the following experimental data. Use a direction field to sketch the graph of its antiderivative if the initial condition is $F(0) = 0$.

x	0	0.2	0.4	0.6	0.8	1.0	1.2	1.4	1.6
$f(x)$	0	0.2	0.5	0.8	1.0	0.6	0.2	0	-0.1

58. (a) Draw a direction field for the function $f(x) = 1/x^2$ and use it to sketch several members of the family of antiderivatives.
 (b) Compute the general antiderivative explicitly and sketch several particular antiderivatives. Compare with your sketch in part (a).

59–64 □ A particle is moving with the given data. Find the position of the particle.

59. $v(t) = \sin t - \cos t, \quad s(0) = 0$

60. $v(t) = 1.5\sqrt{t}, \quad s(4) = 10$

61. $a(t) = t - 2, \quad s(0) = 1, \quad v(0) = 3$

62. $a(t) = \cos t + \sin t, \quad s(0) = 0, \quad v(0) = 5$

63. $a(t) = 10 \sin t + 3 \cos t, \quad s(0) = 0, \quad s(2\pi) = 12$

64. $a(t) = 10 + 3t - 3t^2, \quad s(0) = 0, \quad s(2) = 10$

65. A stone is dropped from the upper observation deck (the Space Deck) of the CN Tower, 450 m above the ground.

- (a) Find the distance of the stone above ground level at time t .
- (b) How long does it take the stone to reach the ground?
- (c) With what velocity does it strike the ground?
- (d) If the stone is thrown downward with a speed of 5 m/s, how long does it take to reach the ground?

66. Show that for motion in a straight line with constant acceleration a , initial velocity v_0 , and initial displacement s_0 , the displacement after time t is

$$s = \frac{1}{2}at^2 + v_0t + s_0$$

67. An object is projected upward with initial velocity v_0 meters per second from a point s_0 meters above the ground. Show that

$$[v(t)]^2 = v_0^2 - 19.6[s(t) - s_0]$$

68. Two balls are thrown upward from the edge of the cliff in Example 8. The first is thrown with a speed of 48 ft/s and the other is thrown a second later with a speed of 24 ft/s. Do the balls ever pass each other?

69. A company estimates that the marginal cost (in dollars per item) of producing x items is $1.92 - 0.002x$. If the cost of producing one item is \$562, find the cost of producing 100 items.

70. The linear density of a rod of length 1 m is given by $\rho(x) = 1/\sqrt{x}$, in grams per centimeter, where x is measured in centimeters from one end of the rod. Find the mass of the rod.

71. Since raindrops grow as they fall, their surface area increases and therefore the resistance to their falling increases. A raindrop has an initial downward velocity of 10 m/s and its downward acceleration is

$$a = \begin{cases} 9 - 0.9t & \text{if } 0 \leq t \leq 10 \\ 0 & \text{if } t > 10 \end{cases}$$

If the raindrop is initially 500 m above the ground, how long does it take to fall?

72. A car is traveling at 50 mi/h when the brakes are fully applied, producing a constant deceleration of 40 ft/s². What is the distance covered before the car comes to a stop?

73. What constant acceleration is required to increase the speed of a car from 30 mi/h to 50 mi/h in 5 s?

74. A car braked with a constant deceleration of 40 ft/s², producing skid marks measuring 160 ft before coming to a stop. How fast was the car traveling when the brakes were first applied?

75. A stone was dropped off a cliff and hit the ground with a speed of 120 ft/s. What is the height of the cliff?

76. A model rocket is fired vertically upward from rest. Its acceleration for the first three seconds is $a(t) = 60t$ at which time the fuel is exhausted and it becomes a freely “falling” body. After 17 seconds, the rocket’s parachute opens, and the (downward) velocity slows linearly to -18 ft/s in 5 s. The rocket then “floats” to the ground at that rate.

- (a) Determine the position function s and the velocity function v (for all times t). Sketch the graphs of s and v .
- (b) At what time does the rocket reach its maximum height and what is that height?
- (c) At what time does the rocket land?

77. A high-speed “bullet” train accelerates and decelerates at the rate of 4 ft/s². Its maximum cruising speed is 90 mi/h.

- (a) What is the maximum distance the train can travel if it accelerates from rest until it reaches its cruising speed and then runs at that speed for 15 minutes?
- (b) Suppose that the train starts from rest and must come to a complete stop in 15 minutes. What is the maximum distance it can travel under these conditions?
- (c) Find the minimum time that the train takes to travel between two consecutive stations that are 45 miles apart.
- (d) The trip from one station to the next takes 37.5 minutes. How far apart are the stations?